

# H-60 O My Virgin Israel

*Jeremiah 31:3-4*

2021/1/21

Words adapted & Music by Hatoko



O My \_\_\_\_\_ vir-gin Is-ra-el!



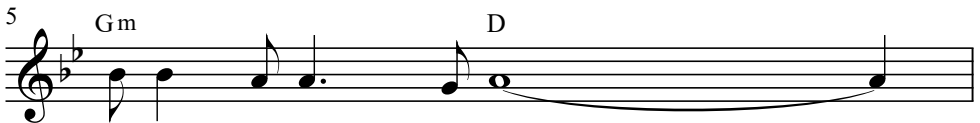
With ev - er - last - ing love,



I have loved\_\_ you, I have loved you.



I have drawn\_\_ you with all My heart



and faith - ful-ness to you.



O My \_\_\_\_\_ vir-gin Is-ra-el!



Once a - gain I will build you now, and you shall be re - built.\_\_\_\_

Gm  
Once a-gain you will take up your tam - bou-rines,

9 Dm  
and you shall be a - dorned\_\_\_\_\_

10 Gm Dm7 Gm  
and go forth in the dance in joy and praise.

11 Gm Dm7 Gm  
La la la la la, go forth in the dance!

12 (Faster as you repeat) Gm Dm Gm  
O My\_\_\_ vir-gin Is-ra-el!

13 Gm  
With ev - er - last - ing love,

14 Gm Dm Gm  
I have loved\_\_\_ you, I have loved you.

15 Gm  
I have drawn\_\_\_ you with all My heart


16 Gm D  
and faith - ful - ness to you.

Musical staff for measure 16, featuring a treble clef, a key signature of two flats (B-flat and E-flat), and a common time signature. The melody consists of a half note G4, a quarter note A4, a quarter note B-flat4, a quarter note C5, a quarter note D5, and a half note E5. Chords Gm and D are indicated above the staff.

17 Gm Dm7 Gm  
O My \_\_\_\_\_ vir - gin Is - ra - el!

Musical staff for measure 17, featuring a treble clef, a key signature of two flats, and a common time signature. The melody consists of a half note G4, a quarter note A4, a quarter note B-flat4, a quarter note C5, a quarter note D5, a quarter note E5, a quarter note D5, a quarter note C5, a quarter note B-flat4, a quarter note A4, and a half note G4. Chords Gm, Dm7, and Gm are indicated above the staff.

18 Gm Gm Dm Gm  
Once a - gain I will build you now, and you shall be re - built. \_\_\_\_\_

Musical staff for measure 18, featuring a treble clef, a key signature of two flats, and a common time signature. The melody consists of a half note G4, a quarter note A4, a quarter note B-flat4, a quarter note C5, a quarter note D5, a quarter note E5, a quarter note D5, a quarter note C5, a quarter note B-flat4, a quarter note A4, and a half note G4. Chords Gm, Gm, Dm, and Gm are indicated above the staff.


19 Gm  
Once a - gain you will take up your tam - bou - rines,

Musical staff for measure 19, featuring a treble clef, a key signature of two flats, and a common time signature. The melody consists of a half note G4, a quarter note A4, a quarter note B-flat4, a quarter note C5, a quarter note D5, a quarter note E5, a quarter note D5, a quarter note C5, a quarter note B-flat4, a quarter note A4, and a half note G4.

20 Dm  
and you shall be a - dorned \_\_\_\_\_

Musical staff for measure 20, featuring a treble clef, a key signature of two flats, and a common time signature. The melody consists of a half note G4, a quarter note A4, a quarter note B-flat4, a quarter note C5, a quarter note D5, a quarter note E5, a quarter note D5, a quarter note C5, a quarter note B-flat4, a quarter note A4, and a half note G4.

21 Gm Dm7 Gm  
and go forth in the dance in joy and praise.

Musical staff for measure 21, featuring a treble clef, a key signature of two flats, and a common time signature. The melody consists of a half note G4, a quarter note A4, a quarter note B-flat4, a quarter note C5, a quarter note D5, a quarter note E5, a quarter note D5, a quarter note C5, a quarter note B-flat4, a quarter note A4, and a half note G4. Chords Gm, Dm7, and Gm are indicated above the staff.

22 Gm Dm7 Gm  
La la la la la, go forth in the dance!

Musical staff for measure 22, featuring a treble clef, a key signature of two flats, and a common time signature. The melody consists of a half note G4, a quarter note A4, a quarter note B-flat4, a quarter note C5, a quarter note D5, a quarter note E5, a quarter note D5, a quarter note C5, a quarter note B-flat4, a quarter note A4, and a half note G4. Chords Gm, Dm7, and Gm are indicated above the staff.

23 Gm Dm7 Gm  
La la la la la, go forth in the dance!

Musical staff for measure 23, featuring a treble clef, a key signature of two flats, and a common time signature. The melody consists of a half note G4, a quarter note A4, a quarter note B-flat4, a quarter note C5, a quarter note D5, a quarter note E5, a quarter note D5, a quarter note C5, a quarter note B-flat4, a quarter note A4, and a half note G4. Chords Gm, Dm7, and Gm are indicated above the staff.