

H-1516

共に主に歌うアレルヤ

—アレルヤ(14) シンクレアのアレルヤから—

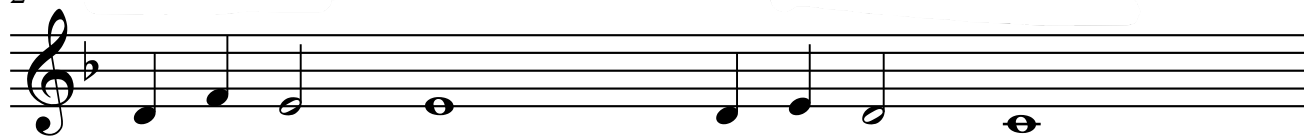
Tomo ni Shu ni Utau Alleluia

Alleluia (14) adopted from Sinclair's Alleluia Words & Music by Hatoko



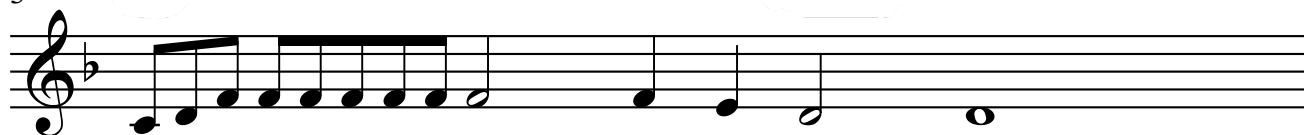
主にうたう アレルヤ
Shu ni u-ta-u Al-le-lu-ia

Sing to the Lord,
Alleluia



アレルヤ アレルヤ
Al-le-lu-ia Al-le-lu-ia

Alleluia.



ともにおられる主に アレルヤ
To-mo ni o-la-le-lu Shu ni Al-le-lu-ia

To the Lord
who is with us,
Alleluia



アレルヤ アレルヤ
Al-le-lu-ia Al-le-lu-ia

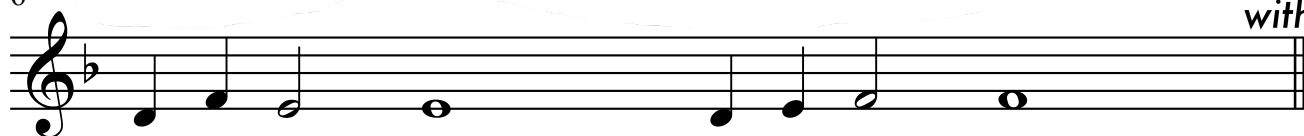
Alleluia



主にうたうアレルヤともに主をほめよアレルヤ
Shu ni u-ta-u Al-le-lu-ia to-mo ni Shu o ho-me-yo Al-le-lu-ia

Sing to the Lord,
Alleluia.

Praise the Lord
with us, Alleluia.



アレルヤ アレルヤ
Al-le-lu-ia Al-le-lu-ia

Alleluia